

**DNA SAMPLE COLLECTOR
with EAR TAG
INSTRUCTION MANUAL**

**Gene Check, Inc.
1175 58th Ave, Ste 100
Greeley, CO 80634
800-822-6740**

Trademarks™

TypiFix™ is a registered trademark of IDnostics AG.

Restrictions and Liabilities

Information in this document is subject to change, and does not represent a commitment by IDnostics AG. Changes made to the information in this document will be incorporated in new editions of the publication. No responsibility is assumed by IDnostics AG for the use or reliability of equipment that is not supplied by IDnostics AG or its affiliated dealers.

TypiFix™ Ear Tag and TypiFix™ Applicator Warranty

In the following TypiFix ear tag™ and TypiFix™ applicator are referred to as “products.”

IDnostics AG guarantees that the products you have received have been thoroughly tested and meet its published specifications.

This guarantee is valid for 24 months only if the product and functions have been used according to the instruction manual. No liability is accepted for loss or damage arising from the incorrect use of the products. IDnostics AG's liability is limited to the repair or replacement of the products or refund of the purchase price at IDnostics AG's option. IDnostics AG is not liable for any consequential damages.

IDnostics AG reserves the right to alter the specifications of the products without prior notice. This will enable us to implement developments as soon as they arise.

Read the Instruction Manual carefully before using the products to ensure that you obtain the best possible results.

General Precautions

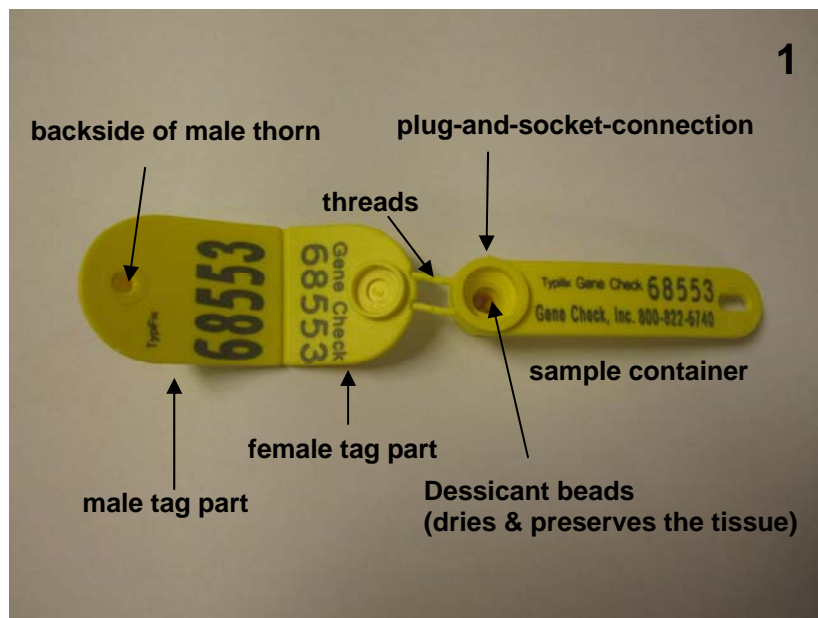
The products should only be used by suitably qualified and trained personnel. The products should only be used for its intended purpose in accordance with the instructions contained in this manual. The use of the products in any manner that is not specified by IDnostics AG will void the warranty, and could cause damage to the product as well as cause possible injury the operator.

Keep out of the reach of children!

Description of the TypiFix™ ear tags

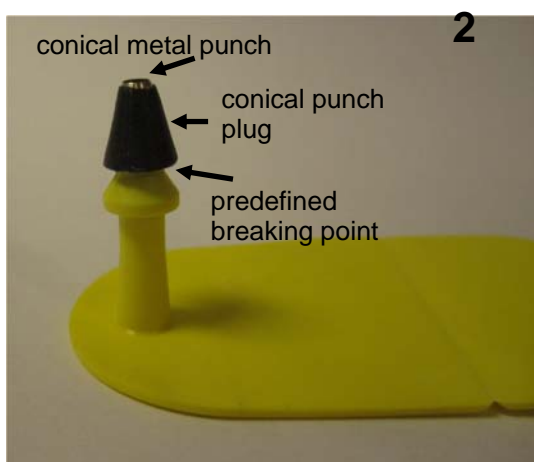
TypiFix™ ear tags offer a combined system of conventional ear tags with an integrated tissue sampling technology. By ear-tagging livestock animals, tissue samples are automatically collected and air-tight sealed in the TypiFix™ sample containers, where the conservation process of the tissue samples immediately begins.

The sample container is connected with two thin threads of polyurethane to the female part of the ear-tag (refer to image 1). In addition, the sample container and the female ear-tag can be connected by a detachable plug-and-socket-connection adjacent to the upper ring of the sample container. The sample container is detached from the plug-and-socket-connection after it has been affixed to the animal.



Handling instructions

During handling of the male tag part, unnecessary force/pressure on the predefined breaking point below the black punch plug should be avoided (refer to image 2).



! TypiFix™ ear tags should in no circumstances be affixed when the following occurs:

- The predefined breaking point is broken or damaged before the usage of the ear tag.
- The metal sleeve (conical punch) inside the hollow black polyamide plug is missing.

Correct loading of the pliers



Take one TypiFix™ ear tag for sheep and goats. Do not separate the tag parts now.

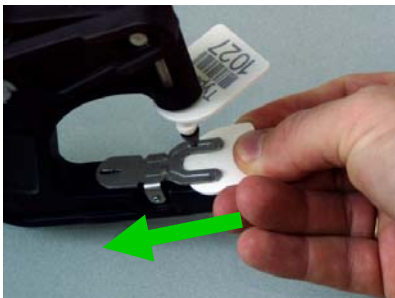
Slide the male tag part onto the pin of the pliers as far as it will go. Only use the special pliers for TypiFix™ ear tags.



Detach the sample container and the female tag part from the male tag part.



Press the sample container on the female tag part (plug-and-socket connection).



Insert the folded sample container/female tag part deep into the cavity under the retainer clip.

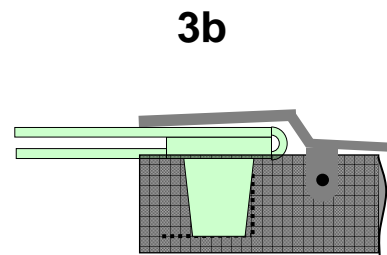
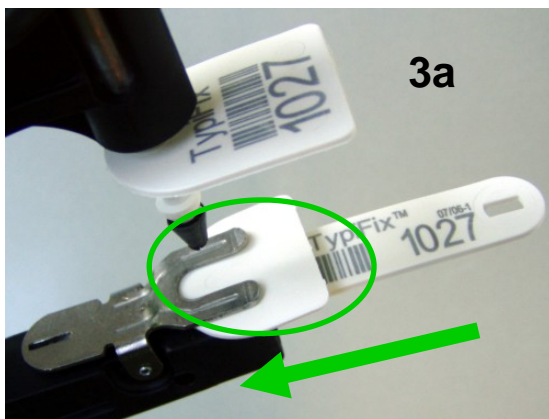


Ready for use.

Controlling of the correct positioning of the tag parts in the applicator

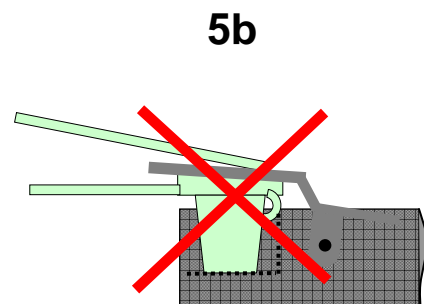
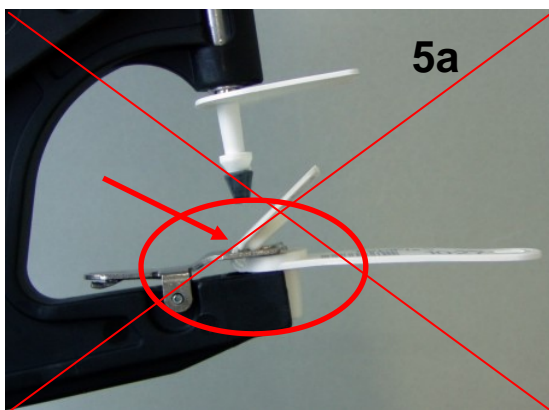
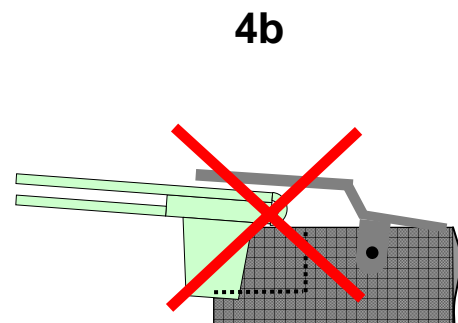
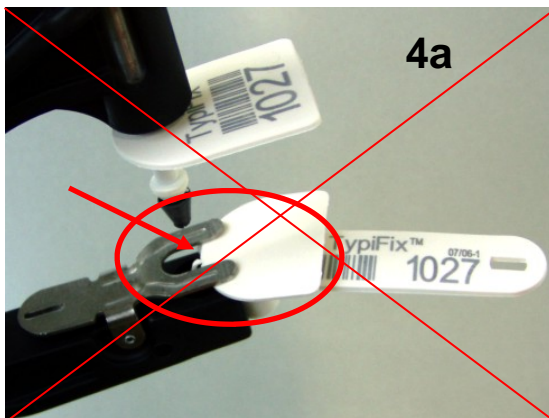
The tip of the conical punch must align within the center of the marked circle on the female tag part. Control the proper alignment by lightly squeezing the pliers until the two ear tag parts slightly touch each other. If necessary, adjust the sample container and control the proper alignment once more.

Correct



The sample container must be seated under the retainer clip (refer to images 3a and 3b). An incorrect alignment of the tag parts is depicted in images 4a, 4b, 5a and 5b.

Incorrect



Affixing the tag



It is advised to limit the sheep's or goat's ability to move before affixing the TypiFix™ ear tags! **Caution: adult sheep and goats can be dangerous!**

Put the animal's ear between the two flags of the loaded pliers. **Ensure that the part of the ear that is to be penetrated is dry and free of dirt.**

Squeeze quickly and firmly!



Cautiously detach the sample container with your hands.

Caution: ears of young sheep and goats are tender and tear easily!



Examine the sample container and verify that the sampling process was correct.



Ensure that the spacing between the two flags of the affixed ear tag is as wide as possible

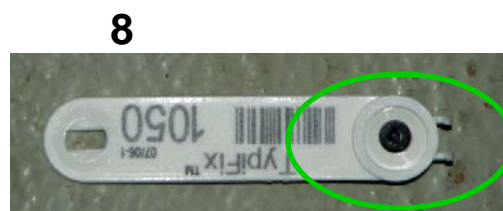
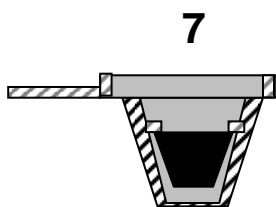
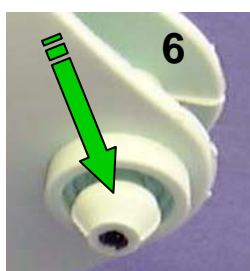
The spacing can be cautiously regulated during the detaching of the sample container

Controlling the TypiFix™ sampling process

The characteristics of the successful TypiFix™ sampling process are:

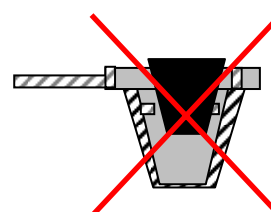
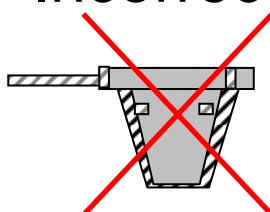
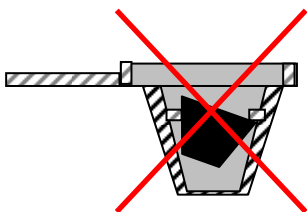
1. The shoulder of the male part of the ear tag sticks completely out of the female part of the ear tag (refer to image 6).
2. The plug resides completely under the lip of the sample container (refer to images 7 and 8).

Correct



In a rare number of cases, the top of the plug resides only partially (tipped or slanted) under the lip of the sample container. If the plug is either not inside the sample container or not entirely under the lip of the sample container, the sampling process was not successful. The sampling process must be repeated with a new TypiFix™ tag!

Incorrect



Mail the loaded sample containers together with a sample submission form to:

**Gene Check, Inc.
1175 58th Ave, Suite 100
Greeley, CO 80634**

Note:

Use a heavy duty envelope mailer or a box to ship samples. Do not use a regular envelope as they tear easily in the mail and samples may be lost.



Colors

TypiFix™ ear tags for sheep and goats are currently only available in:

- yellow



Contact

**Gene Check, Inc.
1175 58th Ave, Suite 100
Greeley, CO 80634**

Phone: 800-822-6740 or 970-472-9951

www.genecheck.com

email: genecheck@genecheck.com